

DATAMAN 8600/8600HDX SERIES BARCODE READERS

Handheld | 1-D/2-D Barcode Reader | Direct Part Mark

➤ **Most powerful direct part mark (DPM) handheld barcode reader**

DataMan® 8600/8600HDX series handheld barcode readers combine Cognex's most powerful algorithms, 2DMax® with PowerGrid™ technology and 1DMax+™ with Hotbars® to read the most challenging DPM barcodes in the most demanding industrial environments.

➤ **Most advanced handheld imaging system**

The DataMan 8600/8600HDX series features UltraLight® technology for superior image formation on any mark type and surface with dark field, bright field, and diffuse lighting. The image sensor and liquid lens technology allow the readers to image barcodes faster and easier and at distances both near and far.

➤ **Exclusive modular industrial communications**

Field interchangeable communication modules allow one reader to be configured to meet specific communication needs to support corded RS-232, USB, and Ethernet options, as well as cordless options including Bluetooth and Wi-Fi.



High speed versatility with ultimate reading performance

- 2DMax with PowerGrid technology provides reliable reading of challenging 2-D codes, including codes without visible perimeters or complete elimination of the finder pattern, clocking pattern, and quiet zone.
- The tuning optimization button automatically selects the best read setup for your application. It locks in settings like symbology, exposure, and focus to read DPM codes fast and reliably.

The industry's most challenging reading applications

DataMan 8600 readers are ideal for applications in any manufacturing environment that require robust DPM and label-based barcode technology and unparalleled reading capability:

- Automotive body and assembly
- Electronics manufacturing
- Incoming inspection
- Shipping
- Automotive kitting
- Aerospace
- Packaging
- Receiving



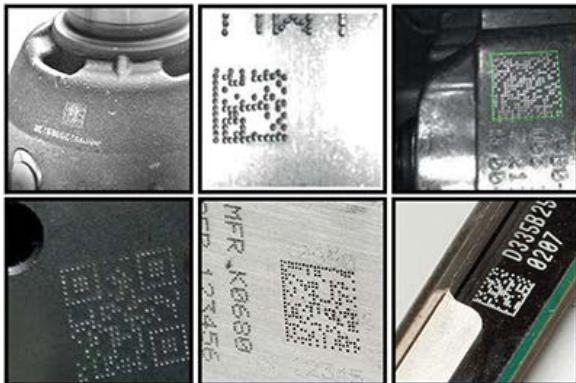
Cognex® DataMan 8600 readers set the performance standard when it comes to industrial barcode reading. Industry-leading DataMan handheld readers introduce several performance milestones in industrial handheld scanner capabilities. To learn more about DataMan 8600 series and 8050 series handheld readers, visit www.cognex.com/barcodereaders

Flexible and easy integration

Industrial Ethernet communication enables DataMan 8600/8600HDX handheld readers to be easily integrated with industrial PLCs and factory networks. These handheld barcode readers support the CognexConnect™ suite of industrial protocols, such as Ethernet/IP, PROFINET, Modbus TCP, and MC Protocol. These protocols are offered with the corded Ethernet model and in the wireless models via the industrial base station.

SCAN CHART

Model	Type	Depth of Field
8600	10 mil 2-D code	56–132 mm
	15 mil 2-D code	56–202 mm
	10 mil 1-D (Code 39)	56–265 mm
8600HDX	3 mil 1-D code	5–150 mm
	2 mil 2-D code	5–35 mm
	3 mil 2-D code	5–80 mm



SPECIFICATIONS

Dimensions	210 mm x 115 mm x 85 mm
Weight	326 g
Operating Temperature	0 °C to 40 °C (32 °F to 104 °F)
Storage Temperature	-40 °C to 60 °C (-40 °F to 140 °F)
Maximum Humidity	95% (non-condensing)
Material	Polycarbonate housing with overmold
Imager	1280 x 1024 high resolution sensor
Aiming	Laser Aimer, Class 1 and Class 2
Status Outputs	LED, beeper and vibration
Communications	Serial module: RS-232, USB Ethernet module: TCP/IP, FTP, industrial protocols: EtherNet/IP, PROFINET, MC protocol, Modbus TCP Intelligent base station: RS-232, USB, Ethernet, industrial protocols Bluetooth module communicates to intelligent Bluetooth base station Wi-Fi module communicates to intelligent Wi-Fi base station
Symbologies	1-D: UPC/EAN/JAN, Codabar, Interleaved 2 of 5, Code 39, Code 128, Code 93, Pharmacode, POSTNET, PLANET Code, GS1 Databar, IMB, Postal 2-D: Data Matrix, QR, MicroQR, PDF417, MaxiCode, Aztec, Micro PDF417
Lighting	UltraLight integrated bright field, dark field, diffuse illumination
Optics	Variable focus liquid lens (0 to over 500 mm depending on code element size)
Power Supply Requirements	DataMan 8600 with serial/USB: 5 V–6 V DC, 5.0 W maximum LPS or NEC Class 2 power supply DataMan 8600 with Ethernet: PoE Class 2 power supply DataMan 8600 with Bluetooth: 3.7 V, 3100 mAh Li-ion battery DataMan Intelligent Base Station: 24 V, 13 W maximum LPS or NEC Class 2 power supply
Protection	IP65
Environmental	Compliant with RoHS directive 2002/98/EEC
Regulatory	CE, CSA, UL, 60950 FCC Part 15, CE (EMC and R&TTE Directives), ICES-003, RSS-210 Issue 8, KCC
Data Validation	US DoD UID guidelines, GS-1, ISO15434 and ISO15418
Operating System	Microsoft® Windows® XP, Windows 7 and Windows 8

COGNEX

Companies around the world rely on Cognex vision and barcode reading solutions to optimize quality, drive down costs and control traceability.

Corporate Headquarters One Vision Drive Natick, MA 01760 USA

Regional Sales Offices

Americas

North America +1 844-999-2469
Brazil +55 (11) 2626 7301
Mexico +01 800 733 4116

Europe

Austria +49 721 958 8052
Belgium +32 289 370 75
France +33 1 7654 9318
Germany +49 721 958 8052

Hungary +36 30 605 5480
Ireland +44 121 29 65 163
Italy +39 02 3057 8196
Netherlands +31 207 941 398
Poland +48 717 121 086
Spain +34 93 299 28 14
Sweden +46 21 14 55 88
Switzerland +41 445 788 877
Turkey +90 216 900 1696
United Kingdom +44 121 29 65 163

Asia

China +86 21 6208 1133
India +9120 4014 7840
Japan +81 3 5977 5400
Korea +82 2 539 9980
Singapore +65 632 55 700
Taiwan +886 3 578 0060

© Copyright 2017, Cognex Corporation. All information in this document is subject to change without notice. All Rights Reserved. Cognex, DataMan, 2DMax, Hotbars, and UltraLight are registered trademarks of Cognex Corporation. CognexConnect, PowerGrid, and 1DMax are trademarks of Cognex Corporation. All other trademarks are the property of their respective owners. Lit. No. DM8600-DS-2017-03-EN

www.cognex.com