

I Series

INDUSTRIAL BARCODE LABEL PRINTER



RUGGED
PARTS
DURABLE
MACHINES
SURPASSING
PERFORMANCE

NEW TPH Pressure
Adjusting
exceptional printing
quality



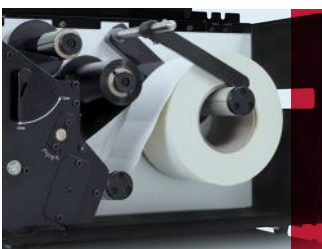
Up/Down Reflective
Media Sensor
super media
compatibility



Fixed Metal
Chassis Frame
stable performance
to handle heavy
workloads



Massive media
loading
and operational
convenience



INDUSTRIAL FEATURES AND APPLICATIONS AT AN AFFORDABLE PRICE

Designed for the budget-minded, the I Series printer has the features like TX Series needed to support many industrial applications at an affordable price.

The core of I Series adopts the advanced structural design technologies that used on TX Series, which is the top-of-the-line products from the whole series. Boasting all-metal construction, the new print-head module and multi-mode media sensors that work together with patented printing mechanics, the industrial printer is constructed for stable, reliable and smart performance, strong media compatibility, heavy duty endurance and the significantly increased print efficiency to your printing needs.

BENEFITS

Fixed chassis frame and all-metal construction fulfils strong structure that supports heavy printing workloads.

The new "TPH Pressure Adjusting System" allows easy adjustment for balanced printhead pressure, and ensures an optimized print effect on various types of media.

National patented "Up/Down Reflective Media Sensors" and precisely designed mechanism work together to ensure accurate media detection, which is adapted to more print needs and applications.

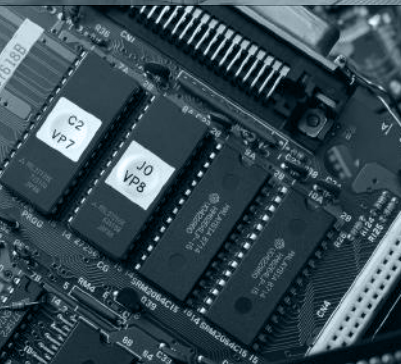
Above the industrial design of chassis, I series not only save space, but also support massive loading capacity for media roll to enhance your operational convenience and efficiency.

SPECIFICATIONS

Model	I 200	I 300
Printing Method	Thermal Transfer	
Printing Resolution	203 dpi	300 dpi
Max Printing Speed	10 ips (254 mm/s)	8 ips (203.2 mm/s)
Max Printing Width	4.25" (108 mm)	4.17" (106 mm)
Max Printing Length	315" (8000 mm)	157" (4000 mm)
HEAT™ Level	II	I
Memory	8 MB FLASH ROM, 16 MB SDRAM	
Media	Width: 4.56" (116 mm) max., 0.39" (10 mm) min. OD: 8" (203.2 mm) max., ID: 1.5" (38 mm) min.	
Media Thickness	0.0024" (0.06 mm) ~ 0.0098" (0.25 mm), including liner	
Ribbon	Ribbon roll: OD: 3.3" (84 mm) max., ID: 1" (25.4 mm) min. Max width: 4.65" (118 mm), Max length: 1968' (600 M), Ink side: both In and Out.	
Media Sensor	Up&Down Reflective (Adjustable) / Transmissive (Adjustable)	
Fonts	Five built-in dot matrix ASCII fonts, Downloadable TrueType Fonts	
Bar Code Types	1D Barcode: Code 39, Code 93, Code 128/subset A, B, C, Codabar, Interleave 2 of 5, UPC A/E 2 and 5 add-on, EAN-13/8/128, UCC-128, etc. 2D Barcode: MaxiCode, PDF417, Data Matrix, QR, etc.	
Interfaces	RS-232 Serial, 10/100 M-bit Ethernet, USB DEVICE 2.0, USB HOST, Centronics Parallel (Optional)	
LCD Display	Graphic Dot Matrix	
Power Rating	110/220 VAC ±10%, 50/60 Hz, 3.5 A	
Weight	15 kgs	
Dimensions	W 11.3" (286 mm) x D 17.6" (448 mm) x H 11.0" (280 mm)	
Operating Environment	Temperature: 32°F ~ +104°F (0°C ~ 40°C), Relative humidity: 5% ~ 85% non condensing	
Storage Environment	Temperature: -40°F ~ +140°F (-40°C ~ 60°C), Relative humidity: 5% ~ 85% non condensing	
Optional Items	Centronics Parallel, External Rewinder, Rotary Cutter	

APPLICATIONS

Industrial Machinery
Electronics
Textiles
Logistics
...



* HEAT™, Heating Equilibrium Adaptive Tuning, newly developed by POSTEK, is a cutting edge technology in heating control of thermal print-heads. With HEAT™, the POSTEK printers can significantly improve their performance in the aspects of printout clarity and print speed. The HEAT™ level represents the fineness of the heating uniformity with level I being the finest.

* All specifications are subject to change without notice.

SAMPLES



POSTEK

POSTEK ELECTRONICS CO., LTD.

Wisdom Plaza, Block B, Tower 2, 18th Floor
Qiaoxiang Road, Nanshan District, Shen Zhen,
Guang Dong, China

T +86-755-83240988
F +86-755-83202898

WWW.POSTEKTECHNOLOGIES.COM